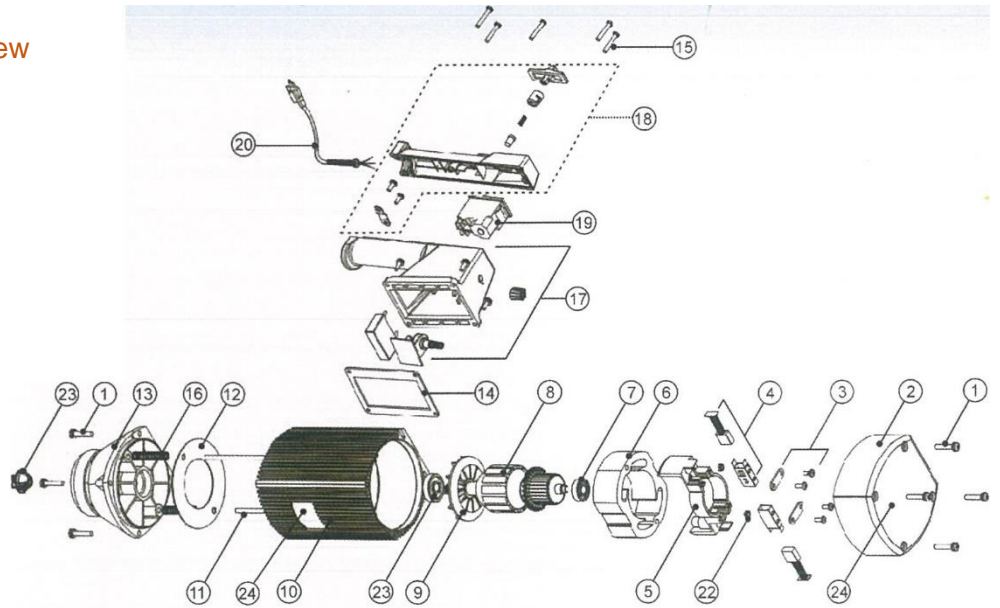


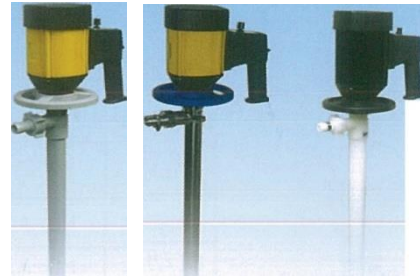
Drum Pump Catalogues

HD-E2-V Motor Exploded View



No.	Name	Part No.	No.	Name	Part No.
01	Screw for plastic housing	881.830P	13	Lower housing	881.800
02	Motor cover	880.8	14	Gasket	881.867
03	Cross screw with gasket	810.84	15	Screw	881.831
04	Carbon brush	887.803	16	Spring	885.807
05	Brush holder	885.808	17	Speed-control switch	880.805
06	Stator	887.802	18	Switch cover	880.802
07	Ball bearing	881.826	19	Power	887.804
08	Armature	887.801	20	Power cord w/strain relief & plug	887.805
09	Fan	885.812	21	Bearing	883.831
10	Motor housing, plastic	885.810P	22	Hexagon nut	884.848
11	Rod connector	885.806	23	Motor coupling	883.833
12	Guide disc	885.804	24	Nameplate	

● Features & Benefits



PPHT

SS316L

PVDF

Safety Coupling

Effectively prevent the spindle stuck, causing damage to the motor

Standard Design Hand Wheel

All motors and pump tubes can be quickly and easily connected and exchanged

Safety Tube Ferrule Outlet

The serrated design is not easy to slip off. It can be moved safely and effectively (pull out)

High Performance Bearing Set

Bearing ensure high abrasion resistance. Stainless steel material is resistant to acid gas corrosion and high temperature causing damage to the motor.

Bearing Tube Seat

HD-SS	Series: SS304
HD-PPHT	Series: PPHT
HD-PVDF	Series: PVDF

Casing

It is fixed to the inner tube, to ensure stability and can be suitably adjusted

Quick Release Thread Design

Easy maintenance without any tools. The impeller and pump casing can be quickly replaced, and the replacement parts can be adjusted accurately

Spindle

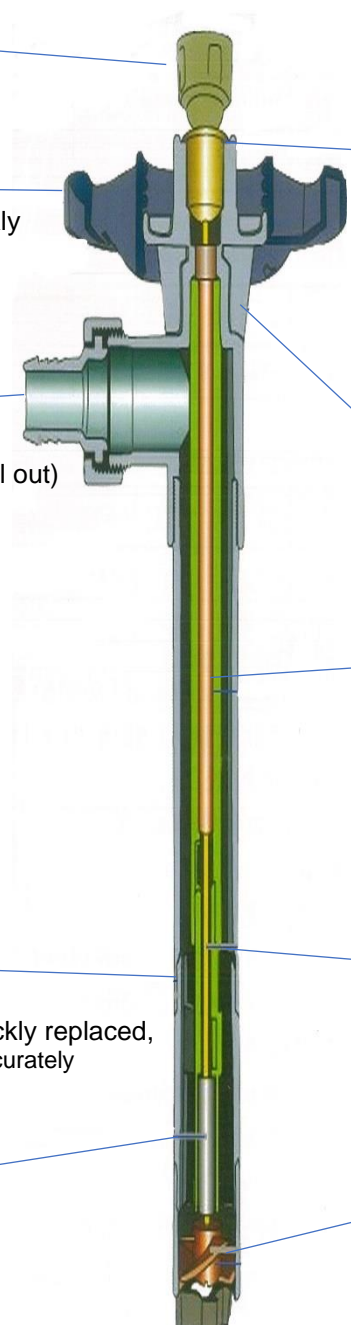
SS Series, PPHT Series : SS316L
PPHT Series, PVDF Series: Hastelloy

Shaft Sleeve

Acid, alkali Teflon, acid, wear resistance, low coefficient of friction

Impeller PVDF

Effectively enhance the pump delivery rate. Solid structure to increase the wear.



● Motor Series and Operating Instructions



◆ Motor Series

HD-A1 HD-A2 Explosion Proof Air Motor
(Applicable to flammable, explosive and non-powered operating occasions)

Item	Model	Power	Weight	Speed	Speed	Protection level	Max Inlet Pressure	Air Consumption
Air Motor	HD-A1	370W	1 Kg	7500 (5bar)	9500 (7bar)	IP54	7bar	10 ℓ / s
Air Motor	HD-A2	640W	1 Kg	10000 (5bar)	14000 (7bar)	IP54	7bar	10 ℓ / s

HD-E2-V Variable Speed Motor
(Suitable for use in non-flammable and explosive occasions)



Item	Model	Power	Speed	Overload Protection	Undervoltage Protection	Protection Level	Governor	Power Cable	Voltage
Electric motor	HD-E2-V	825W	10000	Yes	Yes	IP44	Yes	5m	220V 50/60HZ

HD-ENC-V Enclosed Variable Speed Motor
(Suitable for use in volatile liquids, such as concentrated nitric acid)



Item	Model	Power	Speed	Overload Protection	Undervoltage Protection	Protection Level	Governor	Power Cable	Voltage
Electric motor	HD-ENC-V	825W	10000	Yes	Yes	IP54	Yes	5m	220V 50/60HZ

HD-EX2 Explosion Proof Electric Motor
(Suitable for water-based and low-viscosity, dangerous and flammable and explosive liquids)



Item	Model	Power	Speed	Overload Protection	Explosion Level	Protection Level	Governor	Power Cable	Voltage
Electric motor	HD-EX2	800W	10000	Yes	D II BT4	IP54	No	5m	220V 50/60HZ

◆ Note: before ordering the pump

- Different materials of pumps have different conditions and application ranges.
The following factors should be considered before ordering pumps:
i.) Liquid chemical characteristics (corrosion resistance of pump material) ii.) Flow rate (L/min)
iii.) Head (m) iv.) Temperature (°C) v.) Viscosity (CPS) vi.) Passed particle diameter (mm)
- Confirm power supply, takeover mode and related operating environment

◆ Operating instructions and cautions

- Please check whether the hand wheel and the outlet pipe are locked.
- The blades are allowed to pass through soft materials with particles below 3mm.
If the particle size exceeds this size, please install a filter.
- When using an electric (gas) source, please start from small to large to extend the running time and life of the pump and prevent personnel danger.
- When using, please do not leave the scene.
- If there is abnormal sound, please check whether the inhaled foreign matter collides with the blade.
- ※ When the liquid is transported such as solvents or flammable products, please use explosion-proof motors or air motors. At the same time, please hit the grounding wire and use explosion-proof plugs. At the same time, the plug switch should be kept away from the working place to ensure safe use. If a safety accident occurs due to insufficient safety work, the manufacturer will not be liable for equipment damage or personal injury.
- When installing the motor and pump tube, please confirm whether it is installed properly. Improper installation will cause damage to the motor coupling and pump tube coupling.
- Before installing the motor and pump tube, please make sure that the switch is in the OFF state.
- Do not immerse or splash the motor in liquid.

● HD-E2-V Drum Pump with Variable Speed Motor
(For Neutral Corrosive and Highly Corrosive Liquids)

★ **Pump Tube PP for neutral corrosive**



Model: HD-E2-V+PPHT

Key Features:

1. No Shaft seal, pump modular design, compact, simple and easy to disassemble
2. Built-in motor speed controller, the motor can be adjusted number of revolutions, easy control of the liquid flow rate speed.
3. Motor overheat protection built-in security to prevent overloads, locked rotor motor overheating phenomenon, effectively enhance motor life.
4. Standardized port design, all pump tubes and motors can be interchanged and mutually matched.
5. The pump body design of various materials can adapt to the corrosion resistance requirements of different occasions.
6. Various lengths of pump body design, from 700 mm, 1000 mm, 1200 mm and 1500 mm to 1800 mm can be applied to 25ℓ keg, 200ℓ drum, to 1000ℓ barrel.

★ **Pump Tube PVDF for highly corrosive**



Model: HD-E2-V+PVDF

Application:

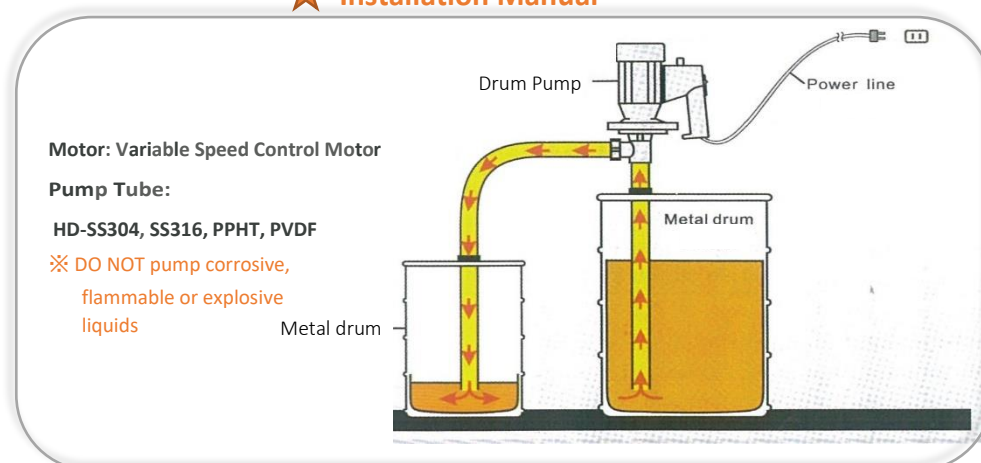
1. PP pump is suitable for moderately corrosive liquids, such as acetic acid, formic acid, sodium hydroxide, potassium hydroxide, silicic acid, hypochlorous acid, aluminium fluoride and other PH value of liquids between 3 and 12.
2. PVDF pump is suitable for highly corrosive liquids, such as hydrochloric acid, sulfuric acid, hydrofluoric acid, nitric acid, propionic acid, sulfuric acid and other strong acid liquids with a PH value between 1-14.
3. Stainless steel 304 pump body is suitable for flammable substances or flammable substances and various organic solvents, such as diesel, gasoline, kerosene, toluene, propylene, styrene, methanol, ethanol, and other light liquids.
4. Stainless steel 316 pump body is suitable for all kinds of food, beverage, medical, lightweight and high-purity fluids.

★ **Pump Tube SS for flammables and thin-bodied oil**

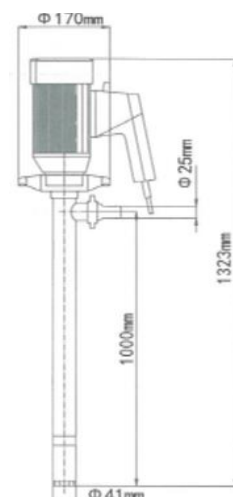


Model: HD-E2-V+SS304

★ **Installation Manual**



★ **Overall Dimensions**



● Technical Data Sheet - Drum Pump with Variable Speed Motor

Motor Type	Model	Flow (ℓ/sec)	Hydraulic Head (m)	Power (w)	Pump Tube Diameter	Pump Tube Length	Pump Tube Material	Shaft Material	Temperature (°C)	Viscosity CPS	Motor Speed (r/min)	Specific Gravity	Outlet Dimension	Remarks
Motor Speed 220V 50/60HZ	HD-E2-V+SS304-700	130	10	825	42 mm	700mm	SS304	SS316	100	800	0-10000	< 1.8	25	
	HD-E2-V+SS304-HH-700	80	22	825	42 mm	700mm			100	1000	0-10000	< 1.8	25	
	HD-E2-V+SS304-1000	130	10	825	42 mm	1000mm			100	800	0-10000	< 1.8	25	
	HD-E2-V+SS304-HH-1000	80	22	825	42 mm	1000mm			100	1000	0-10000	< 1.8	25	
	HD-E2-V+SS304-1200	130	10	825	42 mm	1200mm			100	800	0-10000	< 1.8	25	
	HD-E2-V+SS304-HH-1200	80	22	825	42 mm	1200mm			100	1000	0-10000	< 1.8	25	
	HD-E2-V+SS304-1500	130	10	825	42 mm	1500mm			100	800	0-10000	< 1.8	25	
	HD-E2-V+SS304-HH-1500	80	22	825	42 mm	1500mm			100	1000	0-10000	< 1.8	25	
	HD-E2-V+SS304-1800	130	10	825	42 mm	1800mm			100	800	0-10000	< 1.8	25	
	HD-E2-V+SS304-HH-1800	80	22	825	42 mm	1800mm			100	1000	0-10000	< 1.8	25	
	HD-E2-V+SS316-700	130	10	825	42 mm	700mm	SS316	SS316	100	800	0-10000	< 1.8	25	
	HD-E2-V+SS316-HH-700	130	10	825	42 mm	700mm			100	1000	0-10000	< 1.8	25	
	HD-E2-V+SS316-1000	80	22	825	42 mm	1000mm			100	800	0-10000	< 1.8	25	
	HD-E2-V+SS316-HH-1000	80	22	825	42 mm	1000mm			100	1000	0-10000	< 1.8	25	
	HD-E2-V+SS316-1200	130	10	825	42 mm	1200mm			100	800	0-10000	< 1.8	25	
	HD-E2-V+SS316-HH-1200	80	22	825	42 mm	1200mm			100	1000	0-10000	< 1.8	25	
	HD-E2-V+SS316-1500	130	10	825	42 mm	1500mm			100	800	0-10000	< 1.8	25	
	HD-E2-V+SS316-HH-1500	80	22	825	42 mm	1500mm			100	1000	0-10000	< 1.8	25	
	HD-E2-V+SS316-1800	130	10	825	42 mm	1800mm			100	800	0-10000	< 1.8	25	
	HD-E2-V+SS316-HH-1800	80	22	825	42 mm	1800mm			100	1000	0-10000	< 1.8	25	
	HD-E2-V+PPHT-700	130	10	825	41 mm	700mm	PPHT	SS316 / HC276	80	800	0-10000	< 1.8	25	
	HD-E2-V+PPHT-HH-700	80	22	825	41 mm	700mm			80	1000	0-10000	< 1.8	25	
	HD-E2-V+PPHT-1000	130	10	825	41 mm	1000mm			80	800	0-10000	< 1.8	25	
	HD-E2-V+PPHT-HH-1000	80	22	825	41 mm	1000mm			80	1000	0-10000	< 1.8	25	
	HD-E2-V+PPHT-1200	130	10	825	41 mm	1200mm			80	800	0-10000	< 1.8	25	
	HD-E2-V+PPHT-HH-1200	80	22	825	41 mm	1200mm			80	1000	0-10000	< 1.8	25	
	HD-E2-V+PPHT-1500	130	10	825	41 mm	1500mm			80	800	0-10000	< 1.8	25	
	HD-E2-V+PPHT-HH-1500	80	22	825	41 mm	1500mm			80	1000	0-10000	< 1.8	25	
	HD-E2-V+PPHT-1800	130	10	825	41 mm	1800mm			80	800	0-10000	< 1.8	25	
	HD-E2-V+PPHT-HH-1800	80	22	825	41 mm	1800mm			80	1000	0-10000	< 1.8	25	
	HD-E2-V+PVDF-700	130	10	825	41 mm	700mm	PVDF	HC276	100	800	0-10000	< 1.8	25	
	HD-E2-V+PVDF-HH-700	80	22	825	41 mm	700mm			100	1000	0-10000	< 1.8	25	
	HD-E2-V+PVDF-1000	130	10	825	41 mm	1000mm			100	800	0-10000	< 1.8	25	
	HD-E2-V+PVDF-HH-1000	80	22	825	41 mm	1000mm			100	1000	0-10000	< 1.8	25	
	HD-E2-V+PVDF-1200	130	10	825	41 mm	1200mm			100	800	0-10000	< 1.8	25	
	HD-E2-V+PVDF-HH-1200	80	22	825	41 mm	1200mm			100	1000	0-10000	< 1.8	25	
HD-E2-V+PVDF-1500	130	10	825	41 mm	1500mm	100			800	0-10000	< 1.8	25		
HD-E2-V+PVDF-HH-1500	80	22	825	41 mm	1500mm	100			1000	0-10000	< 1.8	25		
HD-E2-V+PVDF-1800	130	10	825	41 mm	1800mm	100			800	0-10000	< 1.8	25		
HD-E2-V+PVDF-HH-1800	80	22	825	41 mm	1800mm	100			1000	0-10000	< 1.8	25		

HD-E2-V+PVDF-HH-1800	80	22	825	41 mm	1800mm			100	1000	0-10000	< 1.8	25	
HD-E2-V+PVDF-1800	130	10	825	41 mm	1800mm			100	800	0-10000	< 1.8	25	

HD-ENC-V Drum Pump with Enclosed Variable Speed Motor
 (For use in heavily corrosive environments or when aggressive fumes are present)

★ **Pump Tube PP for neutral corrosive**



Model: HD-ENC-V+PPHT-1000

Key Features:

1. Fully enclosed speed control design, effectively preventing some volatile acid mist and acid gas from corroding the internal coil of the motor.
2. The specially treated corrosion-resistant aluminium alloy motor housing, external air-cooling mode, built-in overheating protector, effectively preventing overheating caused by motor overload.
3. IP54 protection level, 5 meters long power cable.
4. High-torque motor torque design, easy to transport some liquids with a specific gravity up to 1.8 (e.g. concentrated sulfuric acid) without being affected

★ **Pump Tube PVDF for highly corrosive**



Model: HD-ENC-V+PVDF-1000

Application:

1. Concentrated acid, concentrated alkali, volatile acid mist occasions, such as concentrated nitric acid.
2. Equipped with a screw pump tube with a reducer, it can easily transport viscous materials such as honey, syrup, glue, paint and etc.

★ **Pump Tube SS for flammables and thin-bodied oil**

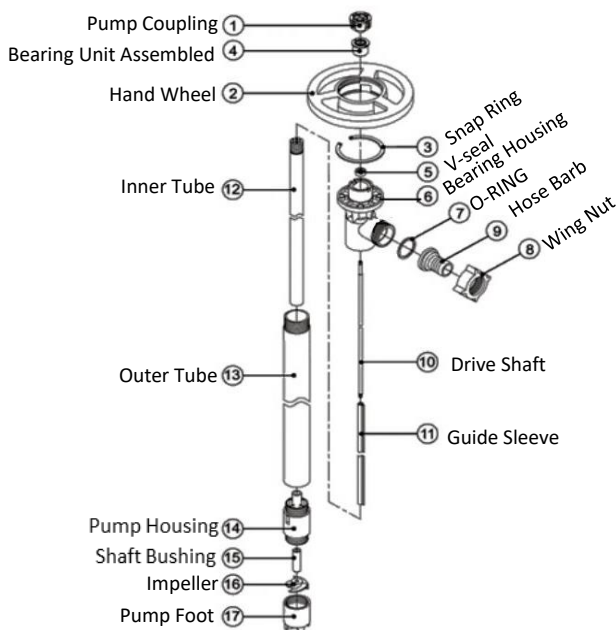


Model: HD-ENC-V+SS304-1000

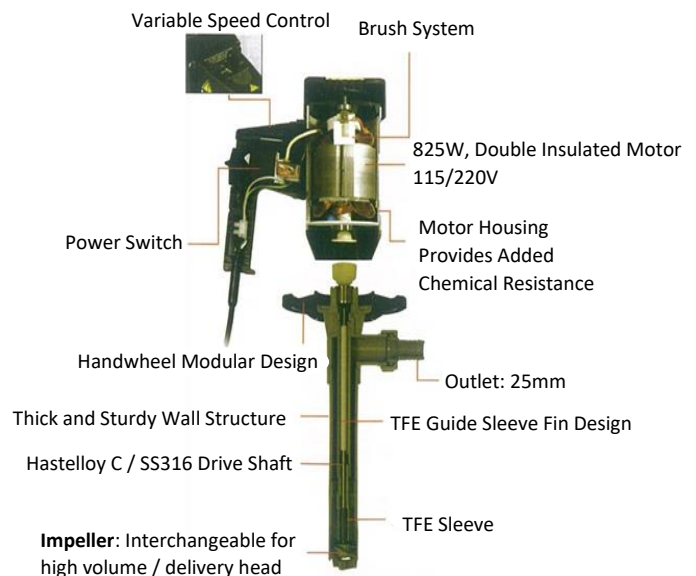
Caution:

1. The liquid to be transported is a volatile, flammable and explosive medium such as a solvent. Must be equipped with explosion-proof motor or explosion-proof pneumatic motor and must be connected to the ground wire to ensure safe use. If the grounding wire is ignored, static electricity may be generated and cause fire or other injuries. If you still have any questions, please call the distributor before using.
2. **Prohibited to use occasions:** cannot be used under high temperature and humidity.

★ **PP PVDF Structure Diagram**



★ **Variable Speed Drum Pump Structure Diagram**



● Technical Data Sheet – Drum Pump with Enclosed Variable Motor

Motor Type	Model	Flow (ℓ/sec)	Hydraulic Head (m)	Power (W)	Pump Tube Diameter	Pump Tube Length	Pump Tube Material	Shaft Material	Temperature (°C)	Viscosity CPS	Motor Speed (r/min)	Specific Gravity	Outlet Dimension	Remarks
Motor With Variable Speed 220V 50/60HZ	HD-ENC-V+SS304-700	130	10	825	42 mm	700mm	SS304	SS316	100	800	0-10000	< 1.8	25	
	HD-ENC-V+SS304-HH-700	80	22	825	42 mm	700mm			100	1000	0-10000	< 1.8	25	
	HD-ENC-V+SS304-1000	130	10	825	42 mm	1000mm			100	800	0-10000	< 1.8	25	
	HD-ENC-V+SS304-HH-1000	80	22	825	42 mm	1000mm			100	1000	0-10000	< 1.8	25	
	HD-ENC-V+SS304-1200	130	10	825	42 mm	1200mm			100	800	0-10000	< 1.8	25	
	HD-ENC-V+SS304-HH-1200	80	22	825	42 mm	1200mm			100	1000	0-10000	< 1.8	25	
	HD-ENC-V+SS304-1500	130	10	825	42 mm	1500mm			100	800	0-10000	< 1.8	25	
	HD-ENC-V+SS304-HH-1500	80	22	825	42 mm	1500mm			100	1000	0-10000	< 1.8	25	
	HD-ENC-V+SS304-1800	130	10	825	42 mm	1800mm			100	800	0-10000	< 1.8	25	
	HD-ENC-V+SS304-HH-1800	80	22	825	42 mm	1800mm			100	1000	0-10000	< 1.8	25	
	HD-ENC-V+SS316-700	130	10	825	42 mm	700mm	SS316	SS316	100	800	0-10000	< 1.8	25	
	HD-ENC-V+SS316-HH-700	130	10	825	42 mm	700mm			100	1000	0-10000	< 1.8	25	
	HD-ENC-V+SS316-1000	80	22	825	42 mm	1000mm			100	800	0-10000	< 1.8	25	
	HD-ENC-V+SS316-HH-1000	80	22	825	42 mm	1000mm			100	1000	0-10000	< 1.8	25	
	HD-ENC-V+SS316-1200	130	10	825	42 mm	1200mm			100	800	0-10000	< 1.8	25	
	HD-ENC-V+SS316-HH-1200	80	22	825	42 mm	1200mm			100	1000	0-10000	< 1.8	25	
	HD-ENC-V+SS316-1500	130	10	825	42 mm	1500mm			100	800	0-10000	< 1.8	25	
	HD-ENC-V+SS316-HH-1500	80	22	825	42 mm	1500mm			100	1000	0-10000	< 1.8	25	
	HD-ENC-V+SS316-1800	130	10	825	42 mm	1800mm			100	800	0-10000	< 1.8	25	
	HD-ENC-V+SS316-HH-1800	80	22	825	42 mm	1800mm			100	1000	0-10000	< 1.8	25	
	HD-ENC-V+PPHT-700	130	10	825	41 mm	700mm	PPHT	SS316 / HC276	80	800	0-10000	< 1.8	25	
	HD-ENC-V+PPHT-HH-700	80	22	825	41 mm	700mm			80	1000	0-10000	< 1.8	25	
	HD-ENC-V+PPHT-1000	130	10	825	41 mm	1000mm			80	800	0-10000	< 1.8	25	
	HD-ENC-V+PPHT-HH-1000	80	22	825	41 mm	1000mm			80	1000	0-10000	< 1.8	25	
	HD-ENC-V+PPHT-1200	130	10	825	41 mm	1200mm			80	800	0-10000	< 1.8	25	
	HD-ENC-V+PPHT-HH-1200	80	22	825	41 mm	1200mm			80	1000	0-10000	< 1.8	25	
	HD-ENC-V+PPHT-1500	130	10	825	41 mm	1500mm			80	800	0-10000	< 1.8	25	
	HD-ENC-V+PPHT-HH-1500	80	22	825	41 mm	1500mm			80	1000	0-10000	< 1.8	25	
	HD-ENC-V+PPHT-1800	130	10	825	41 mm	1800mm			80	800	0-10000	< 1.8	25	
	HD-ENC-V+PPHT-HH-1800	80	22	825	41 mm	1800mm			80	1000	0-10000	< 1.8	25	
	HD-ENC-V+PVDF-700	130	10	825	41 mm	700mm	PVDF	HC276	100	800	0-10000	< 1.8	25	
	HD-ENC-V+PVDF-HH-700	80	22	825	41 mm	700mm			100	1000	0-10000	< 1.8	25	
	HD-ENC-V+PVDF-1000	130	10	825	41 mm	1000mm			100	800	0-10000	< 1.8	25	
	HD-ENC-V+PVDF-HH-1000	80	22	825	41 mm	1000mm			100	1000	0-10000	< 1.8	25	
	HD-ENC-V+PVDF-1200	130	10	825	41 mm	1200mm			100	800	0-10000	< 1.8	25	
	HD-ENC-V+PVDF-HH-1200	80	22	825	41 mm	1200mm			100	1000	0-10000	< 1.8	25	
	HD-ENC-V+PVDF-1500	130	10	825	41 mm	1500mm			100	800	0-10000	< 1.8	25	
	HD-ENC-V+PVDF-HH-1500	80	22	825	41 mm	1500mm			100	1000	0-10000	< 1.8	25	
	HD-ENC-V+PVDF-1800	130	10	825	41 mm	1800mm			100	800	0-10000	< 1.8	25	
	HD-ENC-V+PVDF-HH-1800	80	22	825	41 mm	1800mm			100	1000	0-10000	< 1.8	25	

● HD-EX2 Drum Pump with Explosion Proof Electric Motor
(For Flammables, Hazardous Locations)

★ **Pump Tube PP for neutral corrosive**



Model: HD-E2-V+PPHT

★ **Pump Tube PVDF for highly corrosive**



Model: HD-E2-V+PVDF

★ **Pump Tube SS for flammables and thin-bodied oil**



Model: HD-E2-V+SS304

Key Features:

1. HD-EX2 series is suitable for the explosion-proof capacity, IIB class, and the ignition temperature is not lower than T4 group. It has the characteristics of safety, reliability, reasonable structure, advanced technology, high efficiency, and convenient maintenance.
2. This product complies with the national **GB3836.1-83** [General requirements for explosion-proof electrical equipment for explosive atmospheres], **GB3836.2-83** [Explosion-proof electrical equipment for explosion-proof electrical equipment "D"] and **GB3883.1-83** [Handheld The safety of electric tools].
3. The pump is designed to have a variety of materials such as PP, PVDF, SS316, SS304 and e.t.c. Widely applicable to the use of strong acid and alkalis, organic solvent and hygienic requirements.

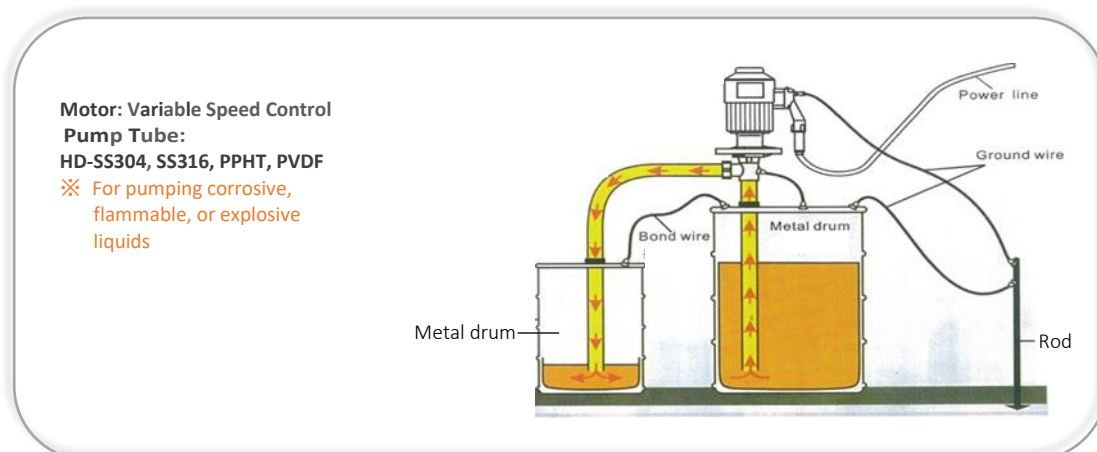
Application:

1. This pump is suitable for industrial and mining shops, chemical plants, drilling teams, and other places of gasoline, such as flammable and explosive materials, alcohol, toluene and e.t.c.

Caution:

1. Use the plug correctly, the pump power cord has no plug at one end and the user choose the appropriate plug. For plugs and sockets that must comply with the explosion-proof regulations and be placed in a normal location away from explosive and flammable materials.
2. No matter any plug is used, ensure reliable grounding. When the connection is properly, check whether the metal casing of the pump is electrically connected to the grounding point. The resistance should not be greater than 1 OHM.
3. Pay special attention to the explosion-proof surface of the explosion-proof parts when replacing the power supply or repairing to avoid damage. Open the motor cavity to clean up carbon powder, oil, etc.

★ **Installation Manual**



● Technical Data Sheet – Drum Pump with Explosion Proof Electric Motor

Motor Type	Model	Flow (ℓ/sec)	Hydraulic Head (m)	Power (w)	Pump Tube Diameter	Pump Tube Length	Pump Tube Material	Shaft Material	Temperature (°C)	Viscosity CPS	Motor Speed (r/min)	Specific Gravity	Outlet Dimension	Remarks
Explosion Proof Electric Motor 220V 50/60HZ	HD-EX2+SS304-700	130	10	825	42 mm	700mm	SS304	SS316	100	800	0-10000	< 1.8	25	
	HD-EX2+SS304-HH-700	80	22	825	42 mm	700mm			100	1000	0-10000	< 1.8	25	
	HD-EX2+SS304-1000	130	10	825	42 mm	1000mm			100	800	0-10000	< 1.8	25	
	HD-EX2+SS304-HH-1000	80	22	825	42 mm	1000mm			100	1000	0-10000	< 1.8	25	
	HD-EX2+SS304-1200	130	10	825	42 mm	1200mm			100	800	0-10000	< 1.8	25	
	HD-EX2+SS304-HH-1200	80	22	825	42 mm	1200mm			100	1000	0-10000	< 1.8	25	
	HD-EX2+SS304-1500	130	10	825	42 mm	1500mm			100	800	0-10000	< 1.8	25	
	HD-EX2+SS304-HH-1500	80	22	825	42 mm	1500mm			100	1000	0-10000	< 1.8	25	
	HD-EX2+SS304-1800	130	10	825	42 mm	1800mm			100	800	0-10000	< 1.8	25	
	HD-EX2+SS304-HH-1800	80	22	825	42 mm	1800mm			100	1000	0-10000	< 1.8	25	
	HD-EX2+SS316-700	130	10	825	42 mm	700mm	SS316	SS316	100	800	0-10000	< 1.8	25	
	HD-EX2+SS316-HH-700	130	10	825	42 mm	700mm			100	1000	0-10000	< 1.8	25	
	HD-EX2+SS316-1000	80	22	825	42 mm	1000mm			100	800	0-10000	< 1.8	25	
	HD-EX2+SS316-HH-1000	80	22	825	42 mm	1000mm			100	1000	0-10000	< 1.8	25	
	HD-EX2+SS316-1200	130	10	825	42 mm	1200mm			100	800	0-10000	< 1.8	25	
	HD-EX2+SS316-HH-1200	80	22	825	42 mm	1200mm			100	1000	0-10000	< 1.8	25	
	HD-EX2+SS316-1500	130	10	825	42 mm	1500mm			100	800	0-10000	< 1.8	25	
	HD-EX2+SS316-HH-1500	80	22	825	42 mm	1500mm			100	1000	0-10000	< 1.8	25	
	HD-EX2+SS316-1800	130	10	825	42 mm	1800mm			100	800	0-10000	< 1.8	25	
	HD-EX2+SS316-HH-1800	80	22	825	42 mm	1800mm			100	1000	0-10000	< 1.8	25	
	HD-EX2+PPHT-700	130	10	825	41 mm	700mm	PPHT	SS316 / HC276	80	800	0-10000	< 1.8	25	
	HD-EX2+PPHT-HH-700	80	22	825	41 mm	700mm			80	1000	0-10000	< 1.8	25	
	HD-EX2+PPHT-1000	130	10	825	41 mm	1000mm			80	800	0-10000	< 1.8	25	
	HD-EX2+PPHT-HH-1000	80	22	825	41 mm	1000mm			80	1000	0-10000	< 1.8	25	
	HD-EX2+PPHT-1200	130	10	825	41 mm	1200mm			80	800	0-10000	< 1.8	25	
	HD-EX2+PPHT-HH-1200	80	22	825	41 mm	1200mm			80	1000	0-10000	< 1.8	25	
	HD-EX2+PPHT-1500	130	10	825	41 mm	1500mm			80	800	0-10000	< 1.8	25	
	HD-EX2+PPHT-HH-1500	80	22	825	41 mm	1500mm			80	1000	0-10000	< 1.8	25	
	HD-EX2+PPHT-1800	130	10	825	41 mm	1800mm			80	800	0-10000	< 1.8	25	
	HD-EX2+PPHT-HH-1800	80	22	825	41 mm	1800mm			80	1000	0-10000	< 1.8	25	
	HD-EX2+PVDF-700	130	10	825	41 mm	700mm	PVDF	HC276	100	800	0-10000	< 1.8	25	
	HD-EX2+PVDF-HH-700	80	22	825	41 mm	700mm			100	1000	0-10000	< 1.8	25	
	HD-EX2+PVDF-1000	130	10	825	41 mm	1000mm			100	800	0-10000	< 1.8	25	
	HD-EX2+PVDF-HH-1000	80	22	825	41 mm	1000mm			100	1000	0-10000	< 1.8	25	
	HD-EX2+PVDF-1200	130	10	825	41 mm	1200mm			100	800	0-10000	< 1.8	25	
	HD-EX2+PVDF-HH-1200	80	22	825	41 mm	1200mm			100	1000	0-10000	< 1.8	25	
HD-EX2+PVDF-1500	130	10	825	41 mm	1500mm	100			800	0-10000	< 1.8	25		
HD-EX2+PVDF-HH-1500	80	22	825	41 mm	1500mm	100			1000	0-10000	< 1.8	25		
HD-EX2+PVDF-1800	130	10	825	41 mm	1800mm	100			800	0-10000	< 1.8	25		
HD-EX2+PVDF-HH-1800	80	22	825	41 mm	1800mm	100			1000	0-10000	< 1.8	25		

HD-EX2+SS304-HH-1800	80	22	825	41 mm	1800mm			100	1000	0-10000	< 1.8	25	
----------------------	----	----	-----	-------	--------	--	--	-----	------	---------	-------	----	--

● HD-A2 Drum Pump with Explosion Proof Air Motor
(For flammable, combustible liquid and use at hazardous environment)

★ **Pump Tube PP for neutral corrosive**



Model: HD-A2+PPHT-1000

Key Features:

1. The air motor is characterized by elegant design, lightweight and ease of use.
2. Standardized port design, all pump tubes and motors can be interchanged and mutually matched.

Application:

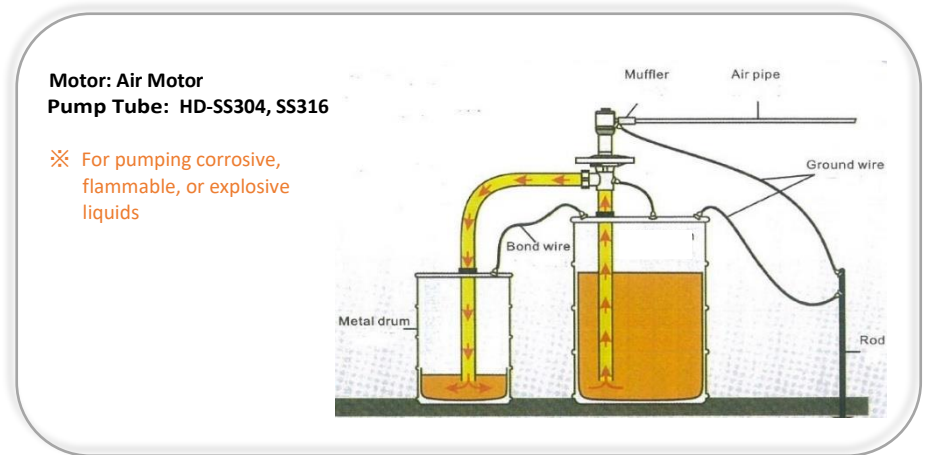
1. For flammables media and use in hazardous area.
2. Specifically for pumping highly combustible media such as solvents or gasoline and for use in explosive environments.

★ **Pump Tube PVDF for highly corrosive**



Model: HD-A2+PVDF-1000

★ **Installation Manual**

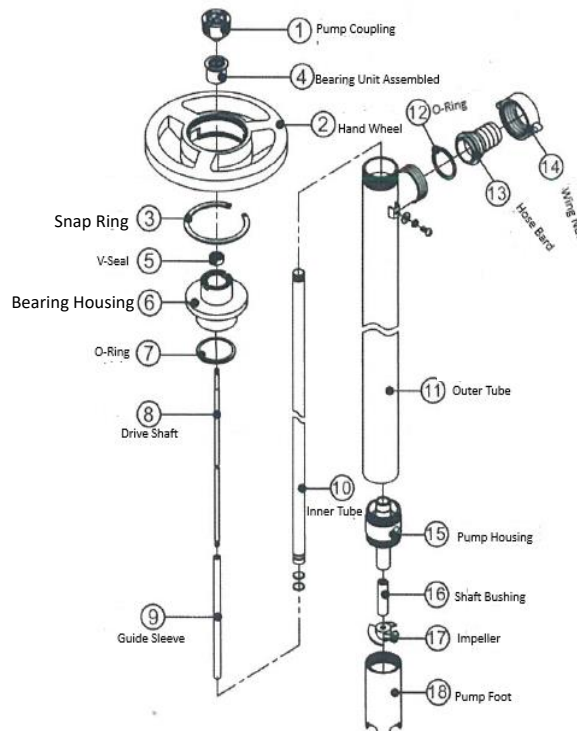


★ **Pump Tube SS for flammables and thin-bodied oil**

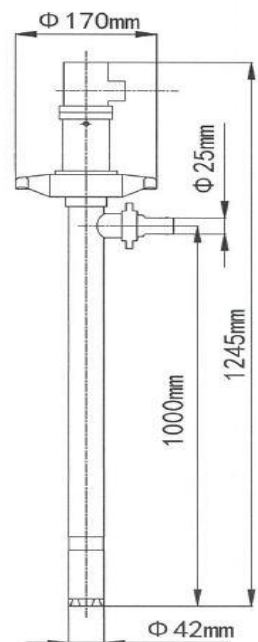


Model: HD-E2+SS304-1000

★ **SS Structure Diagram**



★ **Overall Dimensions**



● Technical Data Sheet – Drum Pump with Explosion Proof Electric Motor

Motor Type	Model	Flow (ℓ/sec)	Hydraulic Head (m)	Power (W)	Pump Tube Diameter	Pump Tube Length	Pump Tube Material	Shaft Material	Temperature (°C)	Viscosity CPS	Motor Speed (r/min)	Specific Gravity	Outlet Dimension	Remarks
Explosion Proof Air Motor 370W	HD-A1+SS304-700	60	7	370	42 mm	700mm	SS304	SS316	100	300	7000	< 1.3	25	
	HD-A1+SS304-1000	60	7	370	42 mm	1000mm			100	300	7000	< 1.3	25	
	HD-A1+SS304-1200	60	7	370	42 mm	1200mm			100	300	7000	< 1.3	25	
	HD-A1+SS304-1500	60	7	370	42 mm	1500mm			100	300	7000	< 1.3	25	
	HD-A1+SS304-1800	60	7	370	42 mm	1800mm			100	300	7000	< 1.3	25	
	HD-A1+SS316-700	60	7	370	42 mm	700mm	SS316	SS316	100	300	7000	< 1.3	25	
	HD-A1+SS316-1000	60	7	370	42 mm	1000mm			100	300	7000	< 1.3	25	
	HD-A1+SS316-1200	60	7	370	42 mm	1200mm			100	300	7000	< 1.3	25	
	HD-A1+SS316-1500	60	7	370	42 mm	1500mm			100	300	7000	< 1.3	25	
	HD-A1+SS316-1800	60	7	370	42 mm	1800mm			100	300	7000	< 1.3	25	
	HD-A1+PPHT-700	60	7	370	42 mm	700mm	PPHT	SS316/ HC276	80	300	7000	< 1.3	25	
	HD-A1+PPHT-1000	60	7	370	42 mm	1000mm			80	300	7000	< 1.3	25	
	HD-A1+PPHT-1200	60	7	370	42 mm	1200mm			80	300	7000	< 1.3	25	
	HD-A1+PPHT-1500	60	7	370	42 mm	1500mm			80	300	7000	< 1.3	25	
	HD-A1+PPHT-1800	60	7	370	42 mm	1800mm			80	300	7000	< 1.3	25	
	HD-A1+PVDF-700	60	7	370	42 mm	700mm	PVDF	HC276	100	300	7000	< 1.3	25	
	HD-A1+PVDF-1000	60	7	370	42 mm	1000mm			100	300	7000	< 1.3	25	
	HD-A1+PVDF-1200	60	7	370	42 mm	1200mm			100	300	7000	< 1.3	25	
HD-A1+PVDF-1500	60	7	370	42 mm	1500mm	100			300	7000	< 1.3	25		
HD-A1+PVDF-1800	60	7	370	42 mm	1800mm	100			300	7000	< 1.3	25		
Explosion Proof Air Motor 640W	HD-A2+SS304-700	90	15	640	42 mm	700mm	SS304	SS316	100	300	15000	< 1.3	25	
	HD-A2+SS304-1000	90	15	640	42 mm	1000mm			100	300	15000	< 1.3	25	
	HD-A2+SS304-1200	90	15	640	42 mm	1200mm			100	300	15000	< 1.3	25	
	HD-A2+SS304-1500	90	15	640	42 mm	1500mm			100	300	15000	< 1.3	25	
	HD-A2+SS304-1800	90	15	640	42 mm	1800mm			100	300	15000	< 1.3	25	
	HD-A2+SS316-700	90	15	640	42 mm	700mm	SS316	SS316	100	300	15000	< 1.3	25	
	HD-A2+SS316-1000	90	15	640	42 mm	1000mm			100	300	15000	< 1.3	25	
	HD-A2+SS316-1200	90	15	640	42 mm	1200mm			100	300	15000	< 1.3	25	
	HD-A2+SS316-1500	90	15	640	42 mm	1500mm			100	300	15000	< 1.3	25	
	HD-A2+SS316-1800	90	15	640	42 mm	1800mm			100	300	15000	< 1.3	25	
	HD-A2+PPHT-700	90	15	640	41 mm	700mm	PPHT	SS316/ HC276	80	300	15000	< 1.3	25	
	HD-A2+PPHT-1000	90	15	640	41 mm	1000mm			80	300	15000	< 1.3	25	
	HD-A2+PPHT-1200	90	15	640	41 mm	1200mm			80	300	15000	< 1.3	25	
	HD-A2+PPHT-1500	90	15	640	41 mm	1500mm			80	300	15000	< 1.3	25	
	HD-A2+PPHT-1800	90	15	640	41 mm	1800mm			80	300	15000	< 1.3	25	
	HD-A2+PVDF-700	90	15	640	41 mm	700mm	PVDF	HC276	100	300	15000	< 1.3	25	
	HD-A2+PVDF-1000	90	15	640	41 mm	1000mm			100	300	15000	< 1.3	25	
	HD-A2+PVDF-1200	90	15	640	41 mm	1200mm			100	300	15000	< 1.3	25	
HD-A2+PVDF-1500	90	15	640	41 mm	1500mm	100			300	15000	< 1.3	25		
HD-A2+PVDF-1800	90	15	640	41 mm	1800mm	100			300	15000	< 1.3	25		

● HD-HV High Viscosity Screw Drum Pump Series
(Suitable for from high to low viscosity liquids)

★ **Medium Viscosity Fluid Drum Pump**

Typical applications include the transfer of resins, polymers, paints, inks, ketchup, honey, shampoo, glycerine, mucilage, etc.



Model: HD-EX2-V+100HV

★ **High Viscosity Fluid Drum Pump**



Model: HD-1100W+1000HV (380V)



★ **PTFE Stator**

Key Features:

1. Screw extrusion rotor design, transport smooth pulse-free traffic and continuous flow.
2. No lubricating oil discharge hose
3. Maximum viscosity up to 100,000 CPS

Application:

1. HD-HV screw pump series is specially designed to transfer of viscous fluids from drum or storage tank. The screw-type pump is designed for continuous flow of viscous fluids without any influence. Often used as polymer, lubricator, ink, cosmetic, etc.

● Technical Data Sheet – High Viscosity Screw Drum Pump

Product Type	Model	Flow (l/sec)	Pressure (bar)	Power (w)	Pump Tube Diameter	Pump Tube Length	Pump Tube Material	Stator Material	Viscosity CPS	Motor Speed (r/min)	Outlet Dimension (mm)	Voltage (v)
High Viscosity Drum Pump	HD-EX2-V+100HV-1000	45	6	825	51 mm	1000mm	SS316	Nitrile Rubber / PTFE	10,000	0-625	25/32	220
	HD-EX2-V+250HV-1000	26	6	825	51 mm	1000mm			25,000	0-625	25/32	220
	HD-EX2-V+100HV-1200	45	6	825	51 mm	1200mm			10,000	0-625	25/32	220
	HD-EX2-V+250HV-1200	26	6	825	51 mm	1200mm			25,000	0-625	25/32	220
High Viscosity Drum Pump (Can Work Continuously)	HD-550W+250HV-1000	60	6	550	51 mm	1000mm			25,000	900	25/32	220/380
	HD-550W+500HV-1000	38	6	550	51 mm	1000mm			50,000	900	25/32	220/380
	HD-550W+250HV-1200	60	6	550	51 mm	1200mm			25,000	900	25/32	220/380
	HD-550W+500HV-1200	38	6	550	51 mm	1200mm			50,000	900	25/32	220/380
	HD-750W+350HV-1000	60	6	750	51 mm	1000mm			35,000	900	25/32	380
	HD-750W+700HV-1000	38	6	750	51 mm	1000mm			70,000	900	25/32	380
	HD-750W+350HV-1200	60	6	750	51 mm	1200mm			35,000	900	25/32	380
	HD-750W+700HV-1200	38	6	750	51 mm	1200mm			70,000	900	25/32	380
	HD-1100W+500HV-1000	60	6	1100	51 mm	1000mm			50,000	900	25/32	380
	HD-1100W+1000HV-1000	38	6	1100	51 mm	1000mm			100,000	900	25/32	380
	HD-1100W+500HV-1200	60	6	1100	51 mm	1200mm			50,000	900	25/32	380
	HD-1100W+1000HV-1200	38	6	1100	51 mm	1200mm			100,000	900	25/32	380

● HD Series Screw Drum Pump Assembly & Installation Manual

1. HD-EX2-V+100HV series pump is shown in **figure 1**, turn the handwheel counter-clockwise to several the pump tube and motor.
2. HD-1100W+1000HV series pump is shown in **figure 2**, loosen the bolts and several the pump body and the motor.
3. Loosen the hex socket screw on the inside of the hex nut. **See figure 3**
4. Insert a screwdriver into the inspection port of mechanical seal. **See figure 3**
5. Use a wrench to loosen the hex nut while avoiding damage to the mechanical seal inspection port and screwdriver. **See figure 3**

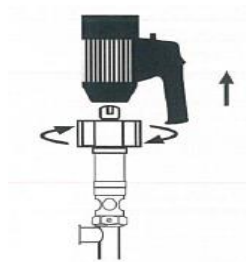


Figure 1

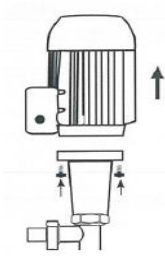


Figure 2

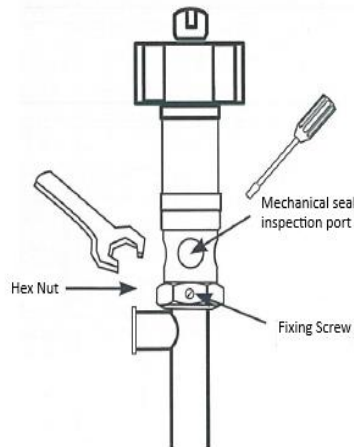


Figure 3

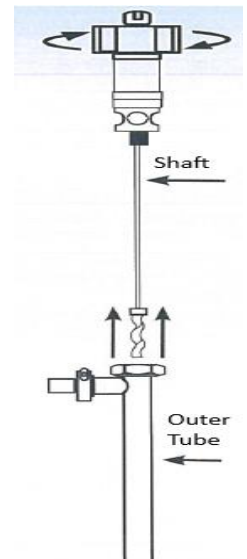
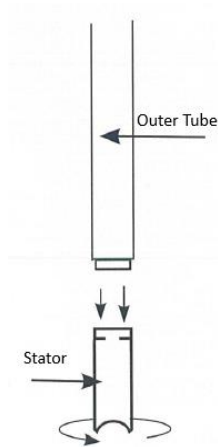


Figure 4

6. After loosening the hex nut, remove the outer tube of the shaft as shown in **figure 4**.
7. Remove the stator from the outer tube, rotate the stator tube clockwise as shown in **figure 5**.
8. Fix the drive shaft in a fixed position and loosen the rotor in a counter-clockwise direction. **See figure 6**



Figure

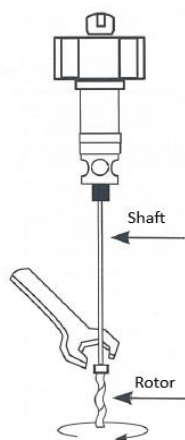
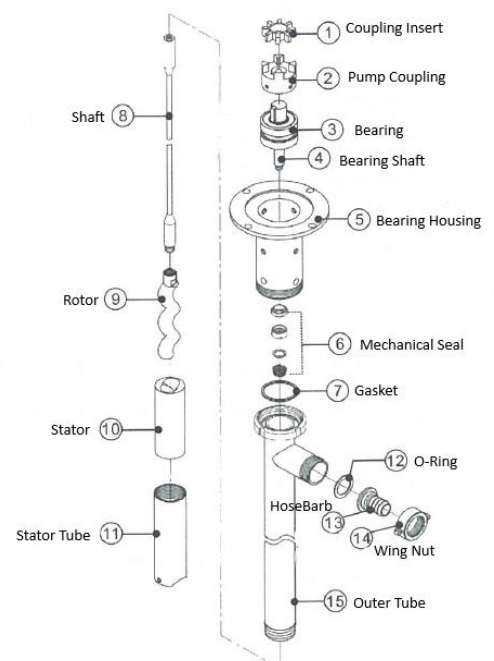


Figure 6

★ Screw Pump Tube Structure Diagram



● TROUBLESHOOTING

Symptoms	Cause
Motor stop runnings	Overcurrent / Motor overheated
	Power short circuit or plug falls out
	Bearing unit abrasion
	Stator worn due to erosion
	Poor power connection
	Defective power switch
Motor overheat	Excessive current affects motor overload
	The voltage of the motor is unstable. Please install a voltage stabilizer or an overcurrent switch to prevent the motor from overheating.
	Too high viscous fluids will affect the motor running slowly
After normal operation, the pump suddenly stops running	Blockage or dirt accumulation, please remove the blockage and do regular inspection.
	The pump tube is blocked. Please replace the strainer and remove the debris from the tube.
	Determine if the temperature is too high, the material is suitable.
Pump tube crack	Cracks are often reported in rotating components. A propagating crack in a pump shaft or a rotor assembly can affect pump vibration.
	Determine whether the material of the pump tube is suitable for the liquid used.
Pump failure	Check the suction pipe whether for dirt or debris
	The suction water level must exceed 3 cm above the bottom of the pump tube
	Check whether the parts of the pump are loose or damaged
	Motor / pump coupling abrasion
	Make sure the motor is operating normally
Excessive noise or vibration	Improper installation of the pump affects vibration during operation
	Check the suction pipe whether for dirt or debris
	Bearing unit abrasion
Pump fittings leakage	Motor / pump coupling abrasion
	Central shaft, bearing unit abrasion
	O-ring damage cause hose barb leakage
	Pump tube loose



If the fault is unreasonable, please cut off the power immediately and contact the distributor for the further inspection.

Tangerine Engineering Pte Ltd

54 Senang Crescent Singapore 416621

Tel: 6748 6211

Email: sales@tangerine.com.sg

Website: www.tangerine.com.sg